



Integrated planning	*****
Consolidation	-----
Data management (ETL)	-----
Analyses	*****
Reporting	*****
Business management	***

Online & offline data gathering in Excel

Reports enabled for drilling and switching from Professional Planner data and structures

Combined reports and analyses on the basis of different server applications (e.g. MS Analysis Services and Professional Planner)

All Excel 2007 formatting and diagram options available

Distribution of reports using Microsoft SharePoint portals

Professional Planner Services for MS Excel 2007

Power tool for business information workers

With Professional Planner Services for Excel (short: Planner Services), Microsoft Excel 2007 becomes an efficient data gathering and reporting frontend for Professional Planner. Planner Services, the new generation of user tools for Professional Planner, are an intuitive and easy-to-handle analyzing and reporting tool for direct access to Professional Planner. Through the use of Planner Services time-consuming data import using different tools has become redundant since data are directly analyzed in Microsoft Excel and summarized in reliable reports.

With Planner Services, planning and analysis applications can be quickly and easily created. The applications are also quickly accessible to decentralized users. The widely-used Excel technology ensures users necessitate an unrivaled short period of familiarization with the programs. The authentication system integrated in Professional Planner is designed to prevent unwanted data viewing.

Overview

With Planner Services you receive a complete solution for

- integrated financial and business planning,
- ad-hoc analysis (OLAP),
- dynamic reporting and
- individual Excel applications

which is smoothly integrated into the familiar Microsoft Excel environment. In addition, they can easily be made available to users for reading and gathering data using the Microsoft SharePoint technology.

Standard reporting in Excel

Several data sources in one Excel sheet

Easy-to-use Excel tool combined with the intelligence of Professional Planner

Simulation							
Mode GmbH/Filiale Düsseldorf							
Plandaten							
Periode	Menge	Preis	Nettoerlös	Skonto %	Skonto	Var. Kosten %	Var. Kosten
04/08-06/08	27.222	33,50	911.944	0,00	0	51,00	465.092
April 08	8.611	33,50	288.472	0,00	0	51,00	147.121
Mai 08	10.000	33,50	335.000	0,00	0	51,00	170.850
Juni 08	8.611	33,50	288.472	0,00	0	51,00	147.121

Vorjahresdaten							
Periode	Menge	Preis	Nettoerlös	Skonto %	Skonto	Var. Kosten %	Var. Kosten
04/07-06/07	28.600	29,51	843.960	0,18	1.560	49,67	419.234
April 07	7.700	29,51	227.220	0,18	420	49,67	112.871
Mai 07	11.000	29,51	324.600	0,18	600	49,67	161.244
Juni 07	9.900	29,51	292.140	0,18	540	49,67	145.120

Planner Services for Excel 2007 enable individual reporting for reading and writing access to Professional Planner

Integrated business planning

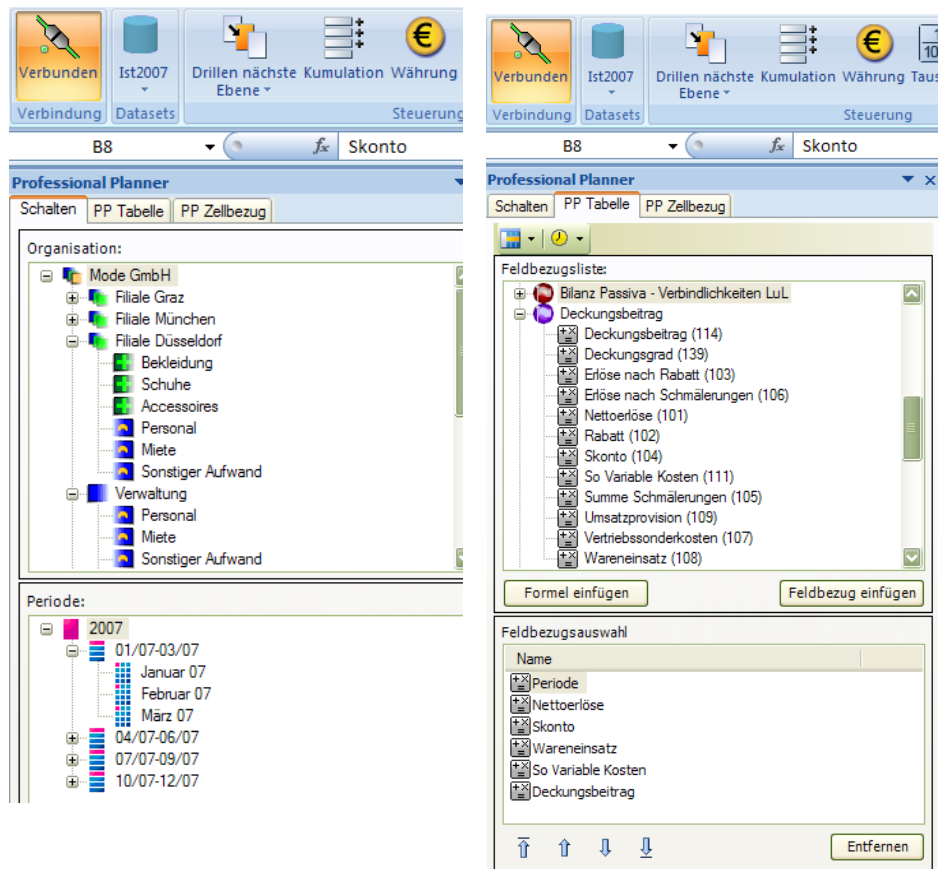
Planner Services are used like a comfortable ad-hoc browser with which you can easily navigate through your data model and analyze your data. Individual reports can be compiled using the drag & drop function and the desired level of detail using the drill-down/roll-up function can be chosen.

Figures for scenarios and simulations can be entered directly into the Excel sheet to perform distributions and calculations with the help of the Professional Planner planning logics using different methods. You can identify relevant information using the sorting, ranking, color coding and further functions which are available at the push of a button.

Furthermore, Planner Services enable you to add key figures to your Excel report.

Standard reporting in Microsoft Excel

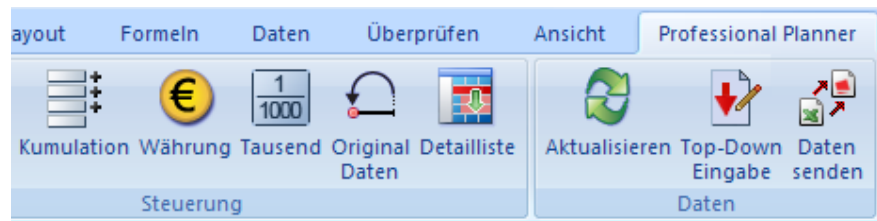
With Planner Services, documents used multiple times can be quickly converted into standard reports for which all Excel functions can be applied. Excel can, therefore, be used as a combined report and analysis application for Professional Planner as well as for Microsoft Analysis Services. The automatic transfer of new structural elements (e.g. cost center, product) considerably reduces the maintenance of the reports. Due to the smooth integration with Microsoft Excel, all familiar Excel functions such as formulas, formattings, charts, etc. can be easily combined and enhanced by up-to-date and compatible Microsoft Server data.



Access to structures and functions saved in Professional Planner using Planner Services is provided by almost identical dialogs – easy access or upgrade for each user.

Budgeting and simulation

As is the case for Professional Planner (PP), Planner Services are also perfectly suitable for planning and budgeting. During a planning process any number of scenarios can be simulated. The distribution methods integrated in Planner Services allow for quick and easy distribution of the entire budget (top-down budgeting). Thanks to the OLCAP technology of Professional Planner, ad-hoc simulations of individual profit and loss, liquidity or balance sheet items show within seconds the effects they have on the company result. OLCAP means: Irrespective of the value that is changed on a hierarchical or time level, the true economic effects on the overall result are simultaneously calculated.



Planner Services icon bar in Excel 2007

Technical data

(Professional Planner 2008 and Planner Services)

Operating systems:

- Microsoft Windows XP Professional®
- Microsoft Windows Server 2003®
- Microsoft Windows Vista® (no home editions)

Memory requirements

- 1 GB RAM
- 10 GB memory available on hard disk (depending on the installation; the average memory for application data has already been considered)

Components

- Graphical user interface for editing the import definitions
- Batch-compatible console program
- Service Manager with graphical user interface

Database

- SQL Server 2005
- SQL 2005 Express
- Oracle 9.i to 10.g

Further details

Intel Pentium 4
Screen resolution 1024 x 768 at 16 Bit High Color
Microsoft Excel 2007
Microsoft Internet Explorer 6.x or higher



“The new Planner Services for Professional Planner 2008 provide all those responsible for planning – from business information workers to CFOs – with a new perspective of the planning and budgeting process since in this tool the intelligence of one of the best planning applications is combined with the simplicity of the most popular Office software. Any Excel-based planning is, as it were, retained at 1:1. This combination enables users to obtain all relevant information allowing them to take better decisions for their area of responsibility and, therefore, for the entire company.”

Wolfgang Neuwirth, Head of Product Development,
WINTERHELLER software GmbH